

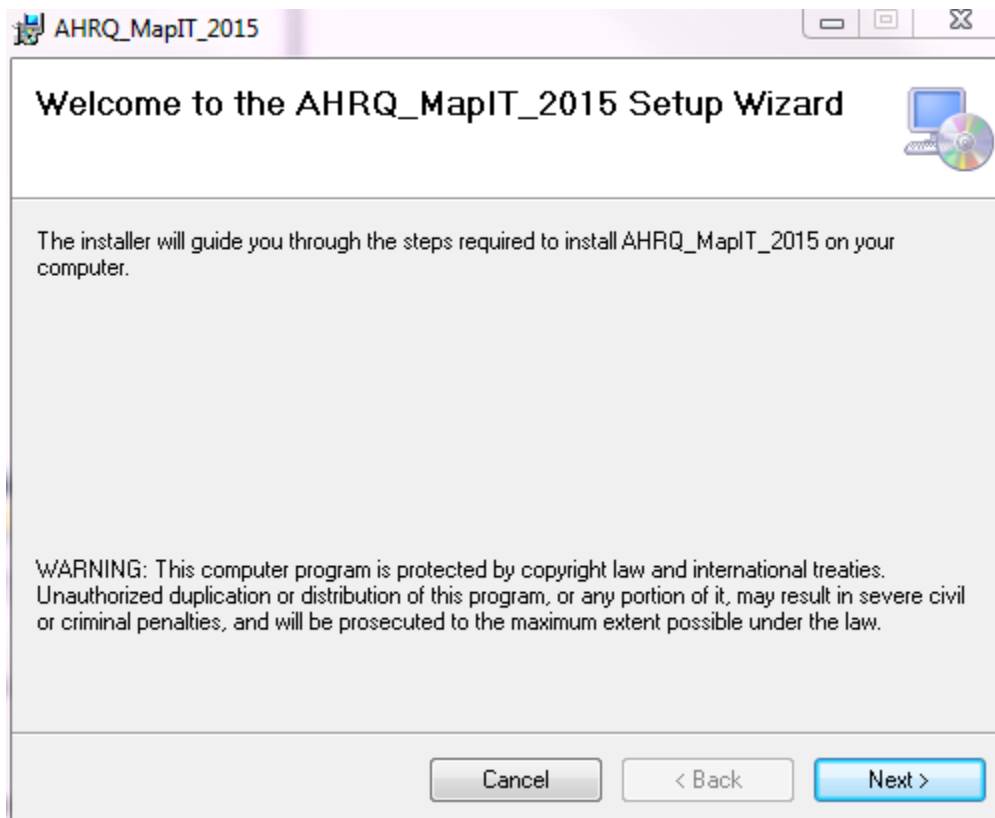
## MapIT Software Installation and Setup

### Minimum System Requirements:

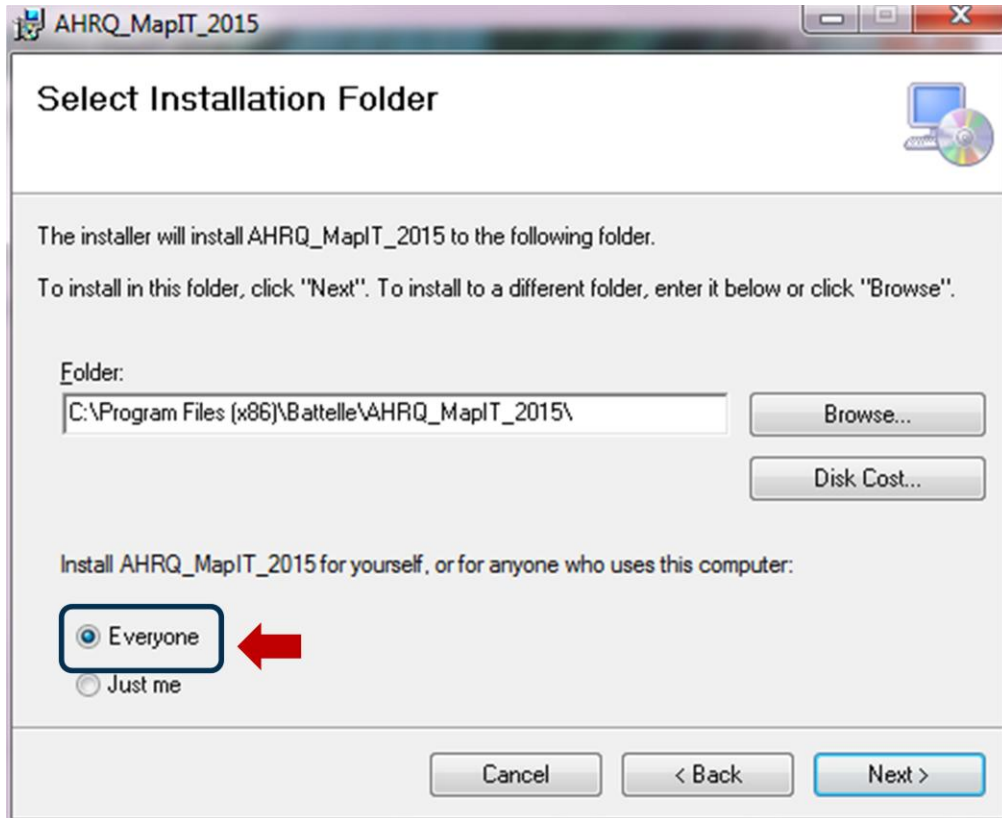
- **OS:** Microsoft Windows 7 Enterprise (or later)
- **Physical Memory:** 8.0 GB (4.0 GB available)
- **Disk Space:** 133 MB
- **System Type:** Tested on 64-bit OS and Intel® Xeon® CPU @ 2.67 GHz (software compiled as 32-bit (x86) compatible, but not tested on 32-bit OS or chipset)
- **User Access Privileges:** Admin rights or at least read/write/execute with ability to install
- **Software and Services:** Microsoft® .Net Framework 4.0 or later

### Installation and Setup Instructions

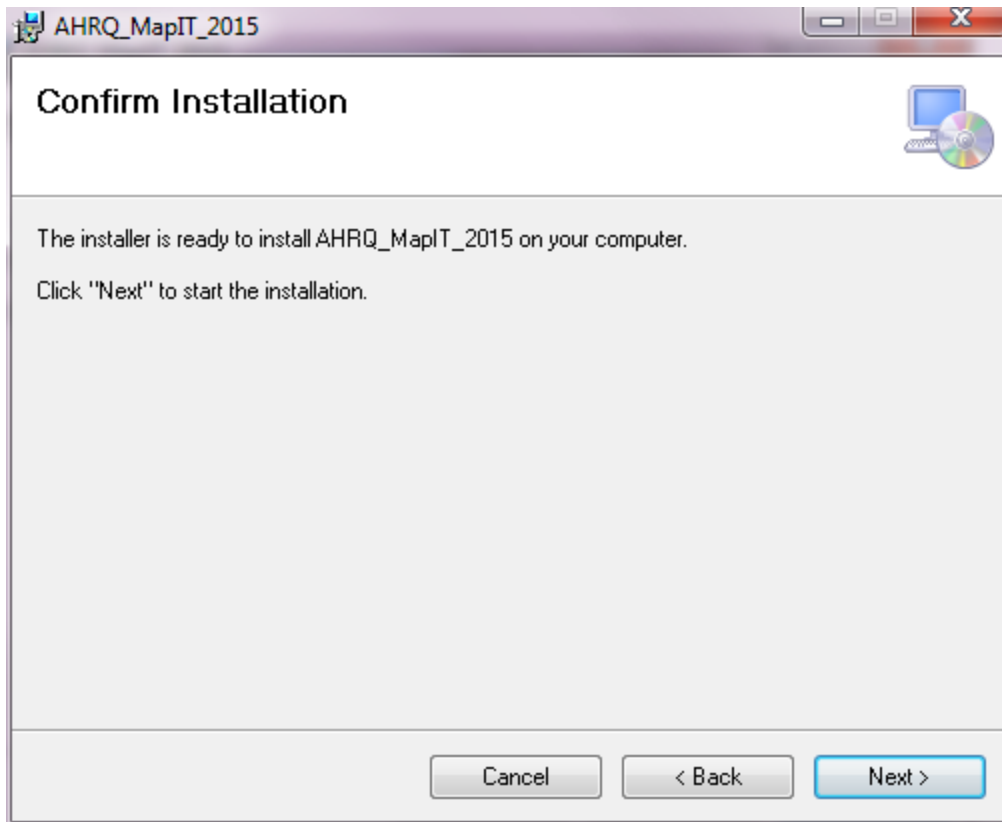
1. Download the Windows Installer package AHRQ\_MapIT\_2015\_Installer.msi to your desktop. Right-click the installer package and select “Install”.
2. Select “Next” at the Setup Wizard dialog screen:



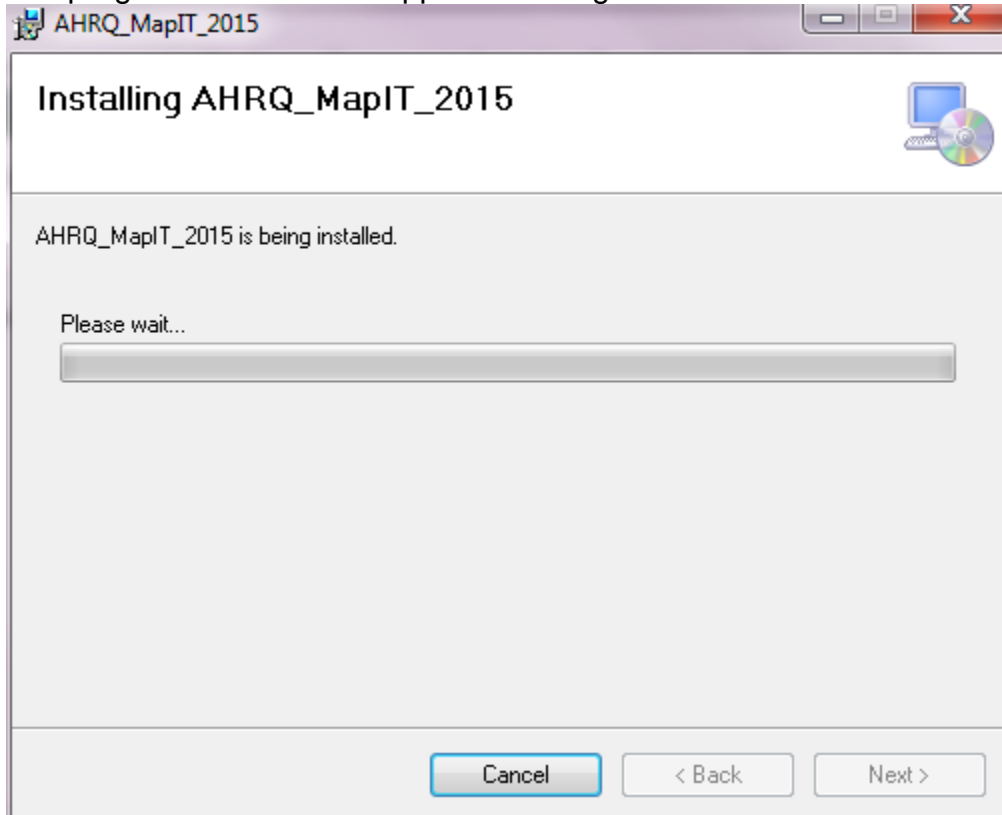
3. Because the MapIT software is a 32-bit program, it will attempt to install in C:\Program Files (x86)\Battelle\AHRQ\_MapIT\_2015\. Choose another directory if this is not desired, ensure that the “Everyone” option is selected and click “Next”.



4. At the Confirm Installation screen, select next.

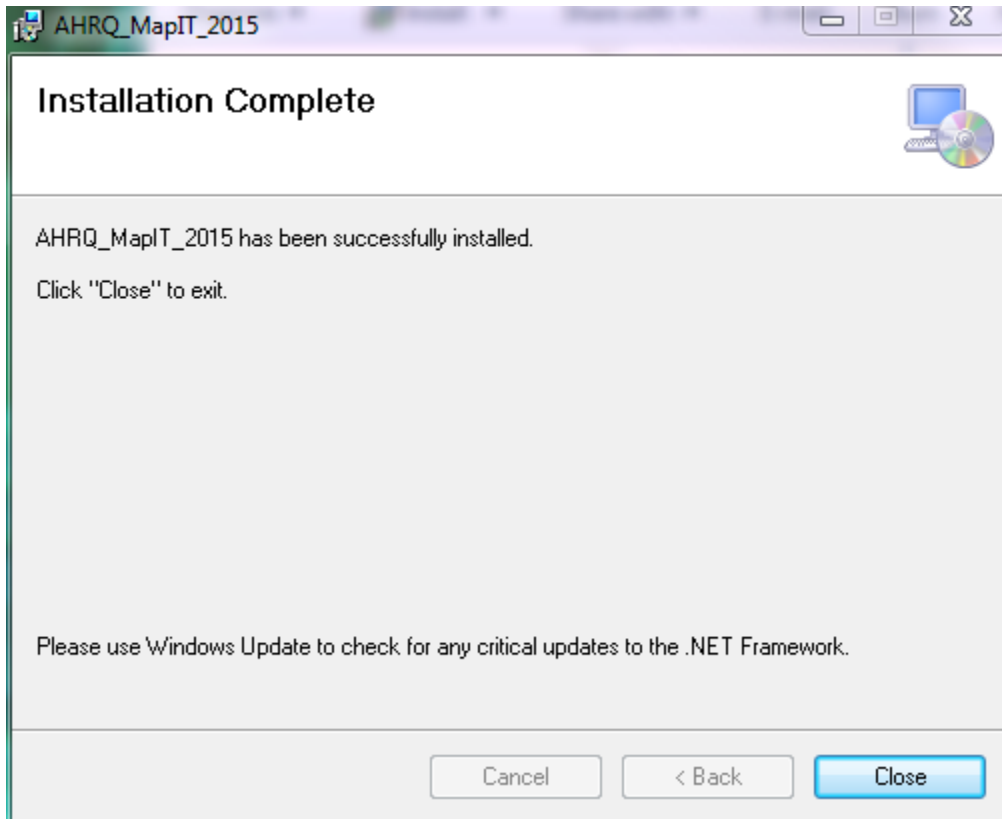


5. A progress indicator will appear showing the status of the installation.

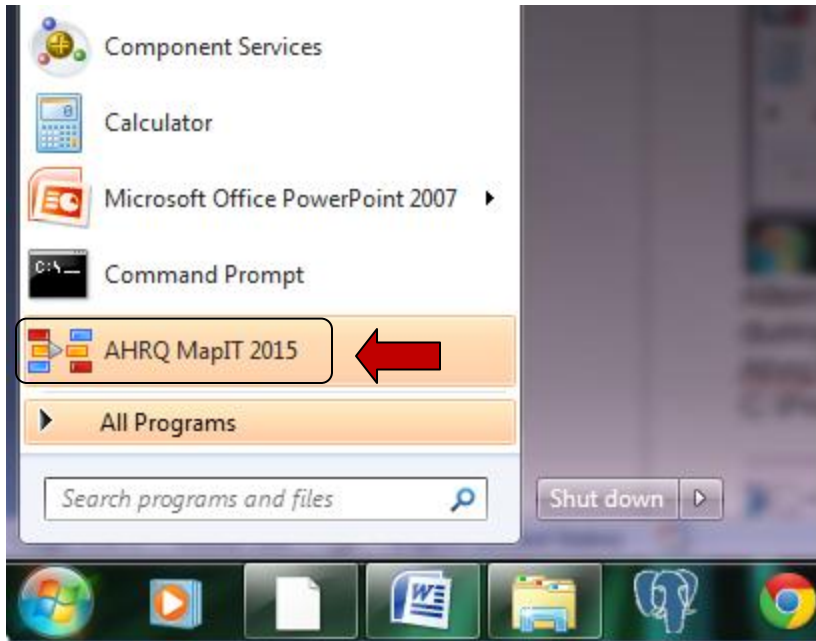


6. A User Account Control dialog may appear asking you if you want to run the program even though it is from an unsigned publisher. Select “Yes”.

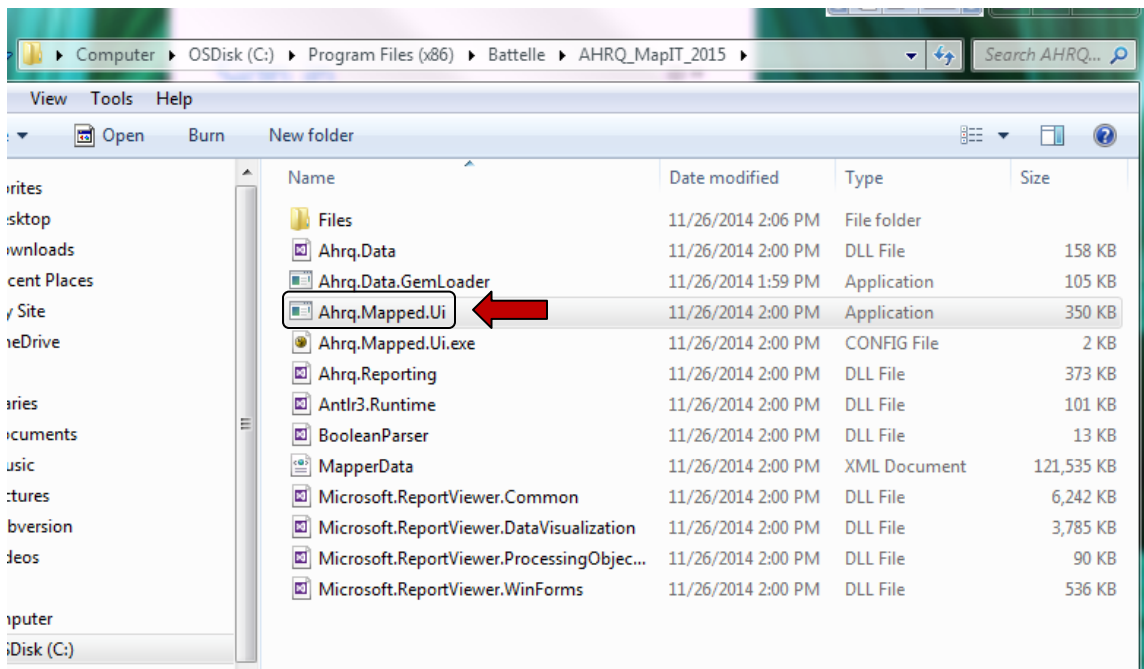
7. If the installation was successful, the Installation Complete screen will appear and indicate that the software was successfully installed. Click “Close” to exit the Setup Wizard.



8. An icon will be added to your computer’s programs list under the Start Menu that can be used to start the application.



Alternatively, you can navigate to the installation directory that was specified during installation and setup, and double-click on the executable called Ahrq.Mapped.Ui. If you chose the default installation directory, the path will be C:\Program Files (x86)\Battelle\AHRQ\_MapIT\_2015



9. The software is now ready to use. A progress indicator with a message indicating that the database is being loaded will appear and may take a minute or two to complete. This is normal and does not indicate a problem with your installation.